



Corrigendum

Corrigendum: The Combination of LPS and Melatonin Induces M2 Macrophage Apoptosis to Prevent Lung Cancer

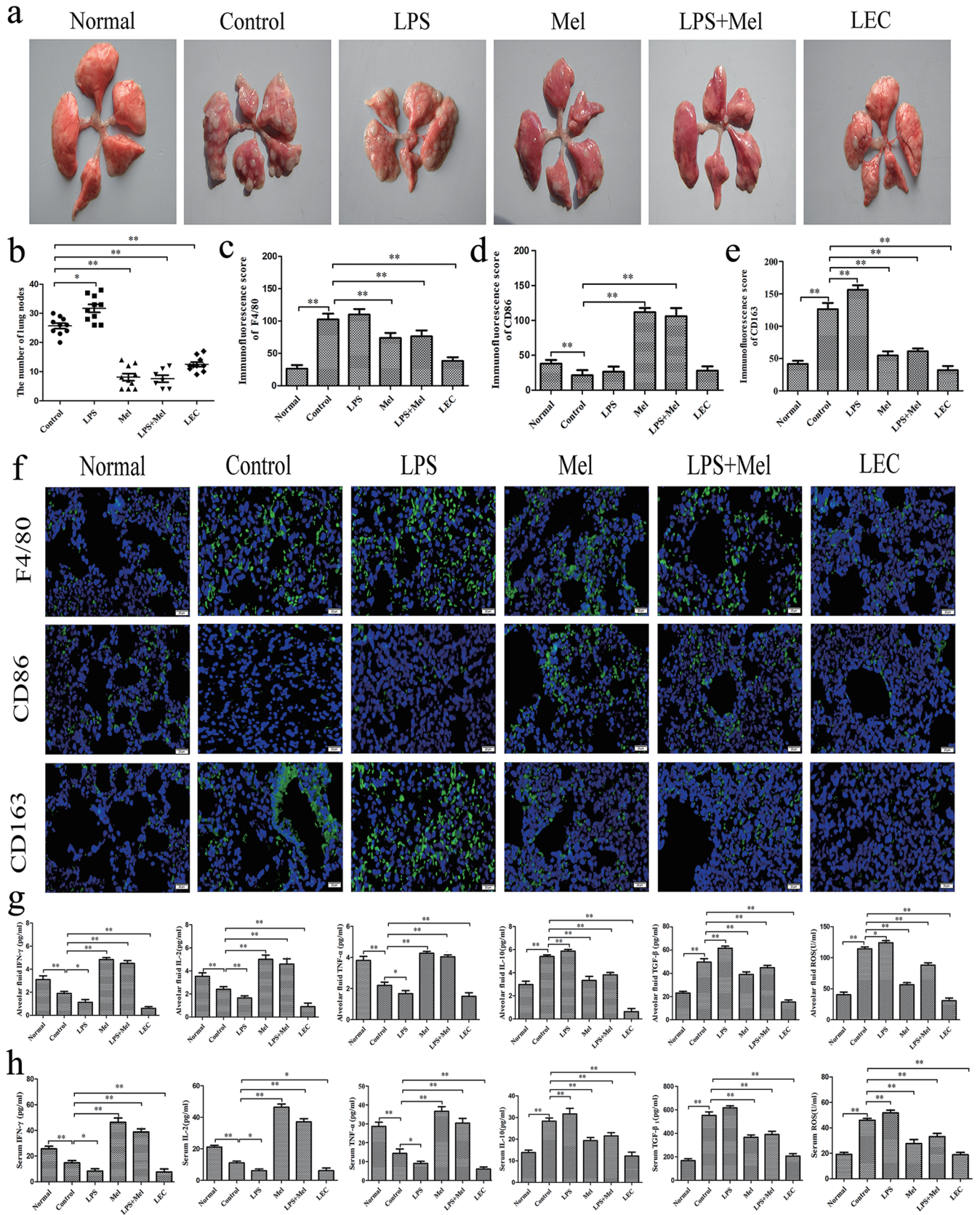


Fan Gao^{1#}, Yukun Lin^{1#}, Mengdi Zhang^{1#}, Yuju Niu¹, Luyao Sun¹, Wenwen Li¹, Haojie Xia¹, Haihong Lin¹, Zhenzhen Guo¹ and Gangjun Du^{1,2}

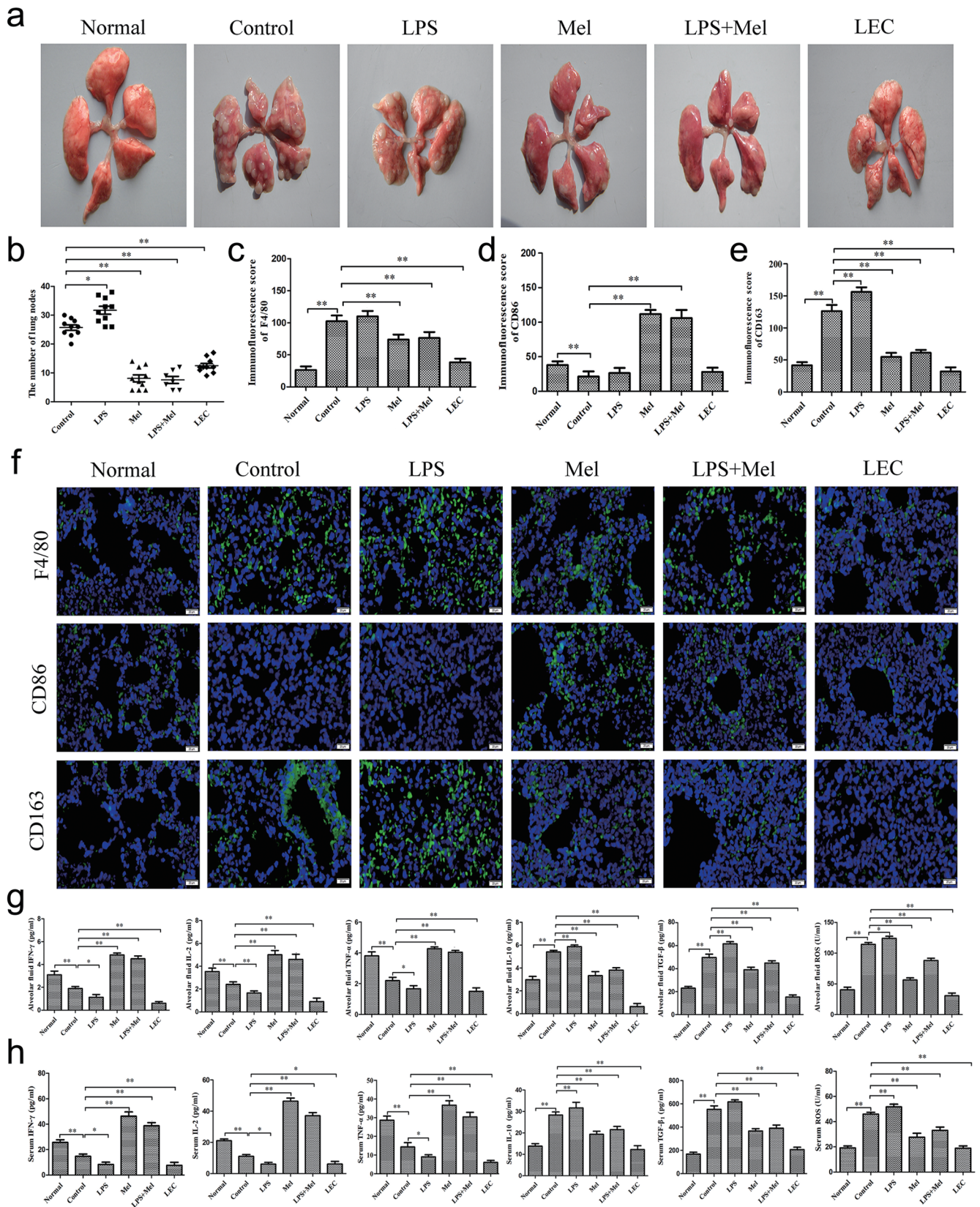
¹Institute of Pharmacy, Pharmaceutical College of Henan University, Kaifeng, Henan, China; ²School of Pharmacy and Chemical Engineering, Zhengzhou University of Industry Technology, Xinzheng, Henan, China; #These authors contributed equally to this work.

Corrigendum: Gao F, Lin Y, Zhang M, Niu Y, Sun L, Li W, et al. The Combination of LPS and Melatonin Induces M2 Macrophage Apoptosis to Prevent Lung Cancer. *Explor Res Hypothesis Med.* 2022;7(4):201-216. doi: 10.14218/ERHM.2022.00014.

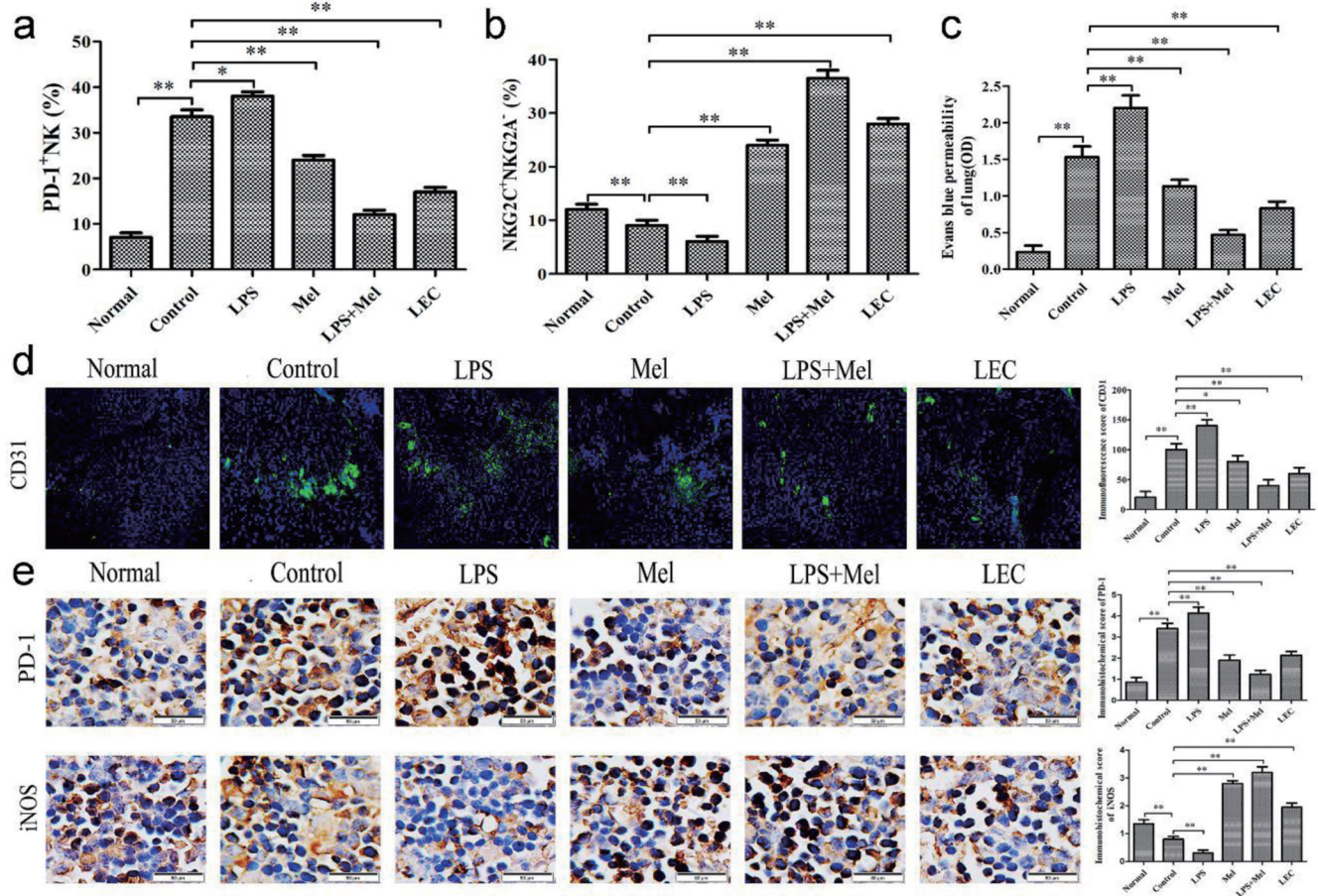
The original version of the article contained an error in Figure 3(f). It should appear as below:



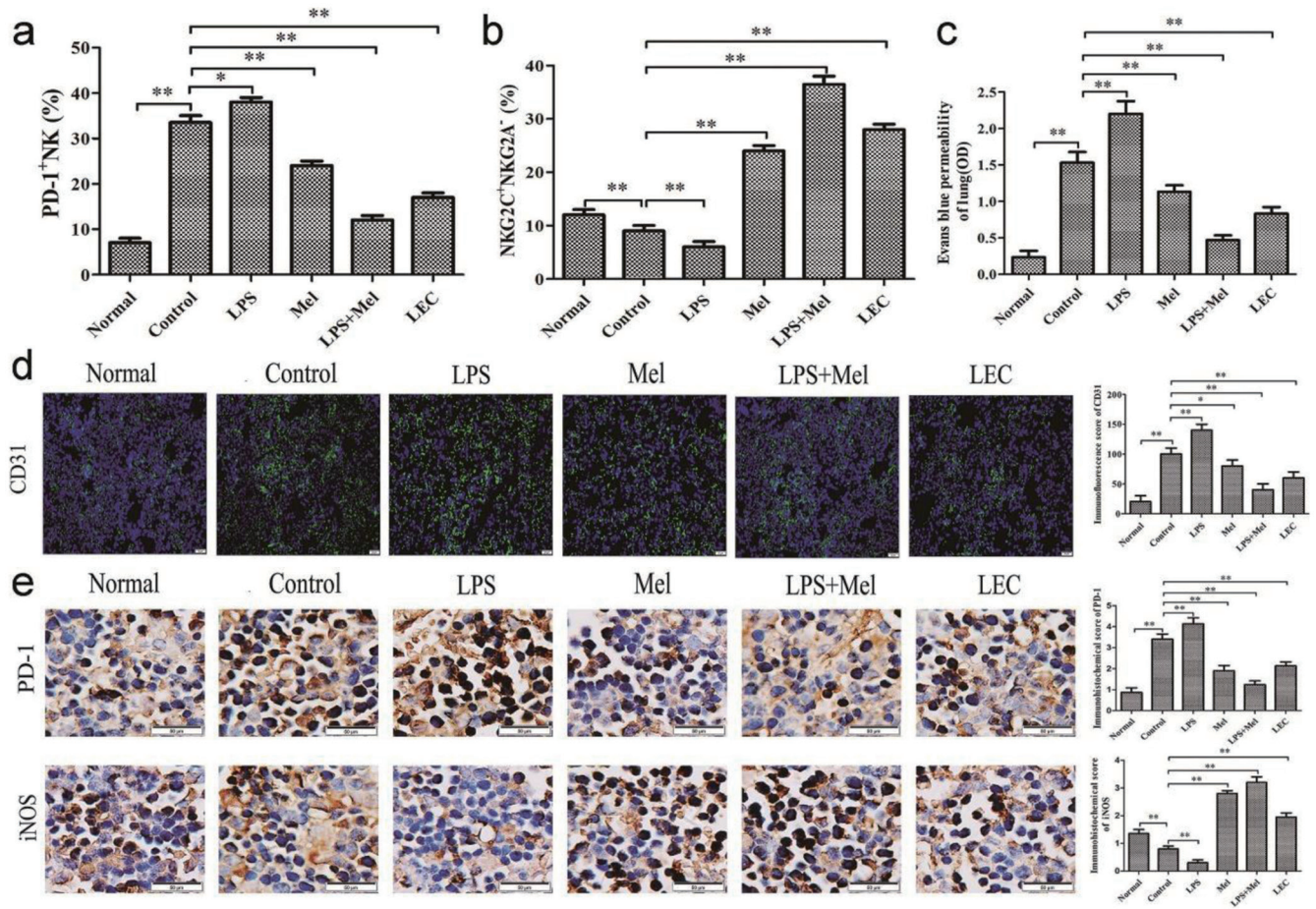
Instead of:



The original version of the article contained an error in Figure 4(d). It should appear as below:



Instead of:



The authors apologize for these errors and state that the updates do not change the results and conclusions originally reported.